



PORTAL  
RESOURCES LTD.

# Discovering and developing quality oil prospects in the Western Canadian Sedimentary Basin

Corporate Presentation  
September 2011



# Disclaimer

## **Undiscovered Resources, OOIP and BOE**

Undiscovered Hydrocarbon-In-Place (equivalent to undiscovered resources) is that quantity of petroleum that is estimated, on a given date, to be contained in accumulations yet to be discovered. There is no certainty that any portion of the undiscovered resources will be discovered or that, if discovered, it will be economically viable or technically feasible to produce. Original-Oil-in-Place (equivalent to Discovered Petroleum Initially in Place), also known as ‘discovered resource’, is defined as that quantity of petroleum that is estimated, as of a given date, to be contained in known accumulations prior to production. The recoverable portion of OOIP includes production, reserves and contingent resources; the remainder is defined as unrecoverable. The terms “barrels of oil equivalent” or “boe” may be misleading, particularly if used in isolation. A boe conversion ratio of six thousand cubic feet (6 mcf) to one barrel (1 bbl) is based on an energy equivalency conversion method primarily applicable at the burner tip and does not represent a value equivalency at the wellhead.

## **Forward Looking Statements**

Statements contained in the presentation that are not historical facts are forward-looking statements that involve various risks and uncertainty affecting the business of Portal Resources Ltd. Actual results may vary materially from the information provided in this presentation. As a result there is no representation by Portal Resources that the actual results realized in the future will be the same in whole or in part as those presented herein. Actual results may differ materially from the results predicted, and reported results should not be considered as an indication of future performance. Factors that could cause actual results to differ from those contained in the forward-looking statements are set forth in, but are not limited to, SEDAR and U.S. Securities and Exchange Commission (Form 20-F) filings.

Neither TSX Venture Exchange nor its Regulation Services Provider (as that term is defined in the policies of the TSX Venture Exchange) accepts responsibility for the adequacy or accuracy of this presentation.

# Portal's Strengths

- Strong team with track record building successful resource companies
- Focused on the Western Canadian Sedimentary Basin (WCSB)
- Early accumulator of highly prospective acreage
- Applying the latest technology to define untapped potential

# Corporate Structure

Issued & Outstanding	48,745,539
Options	3,865,600
Warrants	12,693,450
Fully Diluted	65,304,589
Closely Held (FD)	20,000,000
Cash on Hand	C\$900k
Corporate Debt	None

*(Sept 2011)*

# Board of Directors

A successful group of individuals with the diverse skills necessary to build a Company.

- **David Hottman, Chairman**
- **Barry J. Reid, B.Sc., P. Eng.**
- **John M. MacRae, M.Sc., B.Sc., P. Geol**
- **Gary Nordin, B.Sc (Geol. Hons)**
- **Mark Brown, CA**
- **Frank Wheatley, BComm., LLB**

Financing

Engineering

Geology

Geology

Accounting

Legal

# The Team



**David Hottman, Chairman, President & C.E.O.** – 20 years' experience in corporate finance and management of junior resource companies. Founding team member Portal Resources, Eldorado Gold (TSX, NYSE) and Nevada Pacific Gold (TSX), which was acquired by US Gold (TSX, AMEX) in 2007.



**Barry J. Reid, B.Sc., P. Eng., Director and COO** - An accomplished mechanical engineer with 25 years of oil and gas experience in Western Canada covering all aspects of the oil and gas business. Held positions with Husky Energy/Renaissance Energy and Dome Petroleum among others.



**John M. MacRae, M.Sc., B.Sc., P. Geol, Director** - Accomplished petroleum geologist with over 40 years' experience in Canada's oil & gas industry. Served as the Director of Petroleum Geology for the Province of British Columbia, Ministry of Energy & Mines from 1988 to 1998.

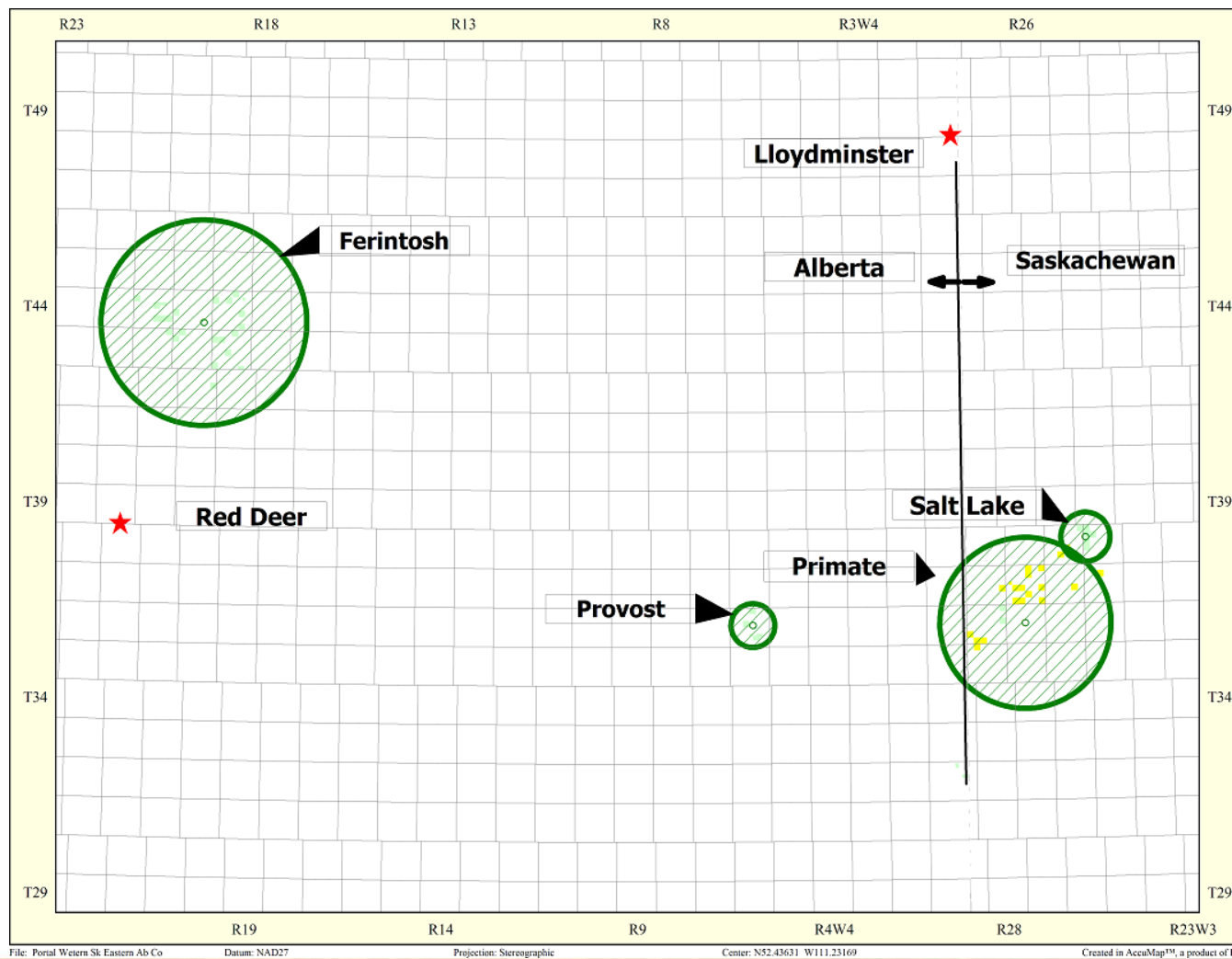


**John Byers, B.Sc. (Eng), P. Geoph, Oil and Gas Advisory Board and a Consultant to the Company** - 40 years of oil and gas industry experience as an exploration geophysicist. Held positions with companies such as Chevron, Mesa Petroleum, Dome Petroleum and Provident Energy. Is proficient in the areas of management, data acquisition, processing and the interpretation of both 2D and 3D seismic.



**John Kanderka, B.Sc., Oil and Gas Advisory Board and a Consultant to the Company** - Has more than 35 years' experience as a landman in the oil and gas industry. Consults for a variety of exploration, production and pipeline companies with operations in Western Canada and the United States. Has been a Member of the Canadian Association of Petroleum Landmen since 1977 and has held the Certification as a Professional Landman since 1991.

# Land Positions



File: Portal Western Sk Eastern Ab Co Datum: NAD27 Projection: Stereographic Center: N52.43631 W111.23169 Created in AccuMap™, a product of IHS

# Portal Projects

- **SALT LAKE (BIRDBEAR)** (25% working interest)
  - Oil & gas development Project in West-Central Saskatchewan
  - Six sections of Crown land
- **BIGWAVE** (28.5% working interest)
  - Oil & gas exploration play in Central Alberta
  - 22 sections of Crown land
- **PRIMATE** (50% working interest)
  - Oil & gas development Project in West-Central Saskatchewan
  - Two sections of Crown land
- **PROVOST** (100% working interest)
  - Oil & gas development Project in West-Central Saskatchewan
  - 3 <sup>3</sup>/<sub>4</sub> sections of Crown land

# Bigwave Project: Overview

- Portal is testing an unconventional oil play concept on a major Cretaceous oil & gas source and producing interval
- Offers exposure to light oil, estimated at 5 to 10 mmbbl of OOIP per section
- First horizontal well drilled & cased for CAD\$1.3 million
- The next phase - completion of well, frac and reservoir testing - budgeted at CAD\$1 million
- Potential horizontal drilling locations on JV lands could reach 70
  - Tremendous discovery and production leverage
- Significant existing conventional Mannville gas production
- Alberta revised royalty program: Maximum of 5% royalty in the first year or 50,000 barrels of production on all new horizontal wells

# Bigwave Project: Analog To Cardium & Bakken

Reservoir characteristics comparable to Cardium & Bakken - leading unconventional oil resource plays in Western Canada.

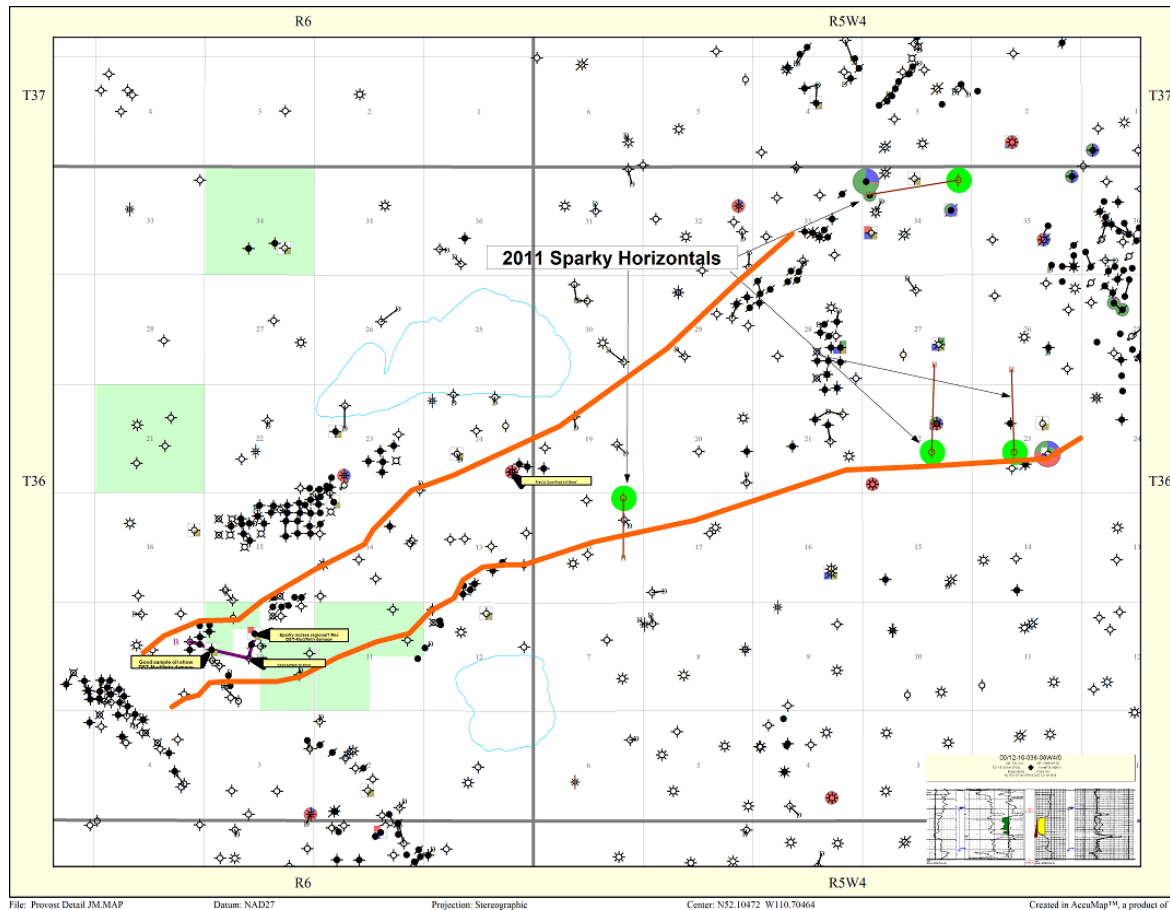
**Western Canadian Sedimentary Basin Oil Geological Comparison Table**

	<b>Pembina/Cardium</b>	<b>Portal</b>	<b>Bakken</b>
OOIP/Section (mmb)	5-10	<b>5-10*</b>	5
Est. Hz Incremental Recovery	10%	<b>10-20%*</b>	8-18%
Depth (m)	1,200-2,000	<b>1,000</b>	1,600
Porosity	12%	<b>10%</b>	10%
Permeability (mD)	1-50+	<b>0.1-1.0</b>	0.1-1.0
Average net pay (m)	7	<b>7-10</b>	4
Average API (degrees)	40	<b>40*</b>	42
Water Saturation (ws)	25%	<b>15-25%</b>	40%

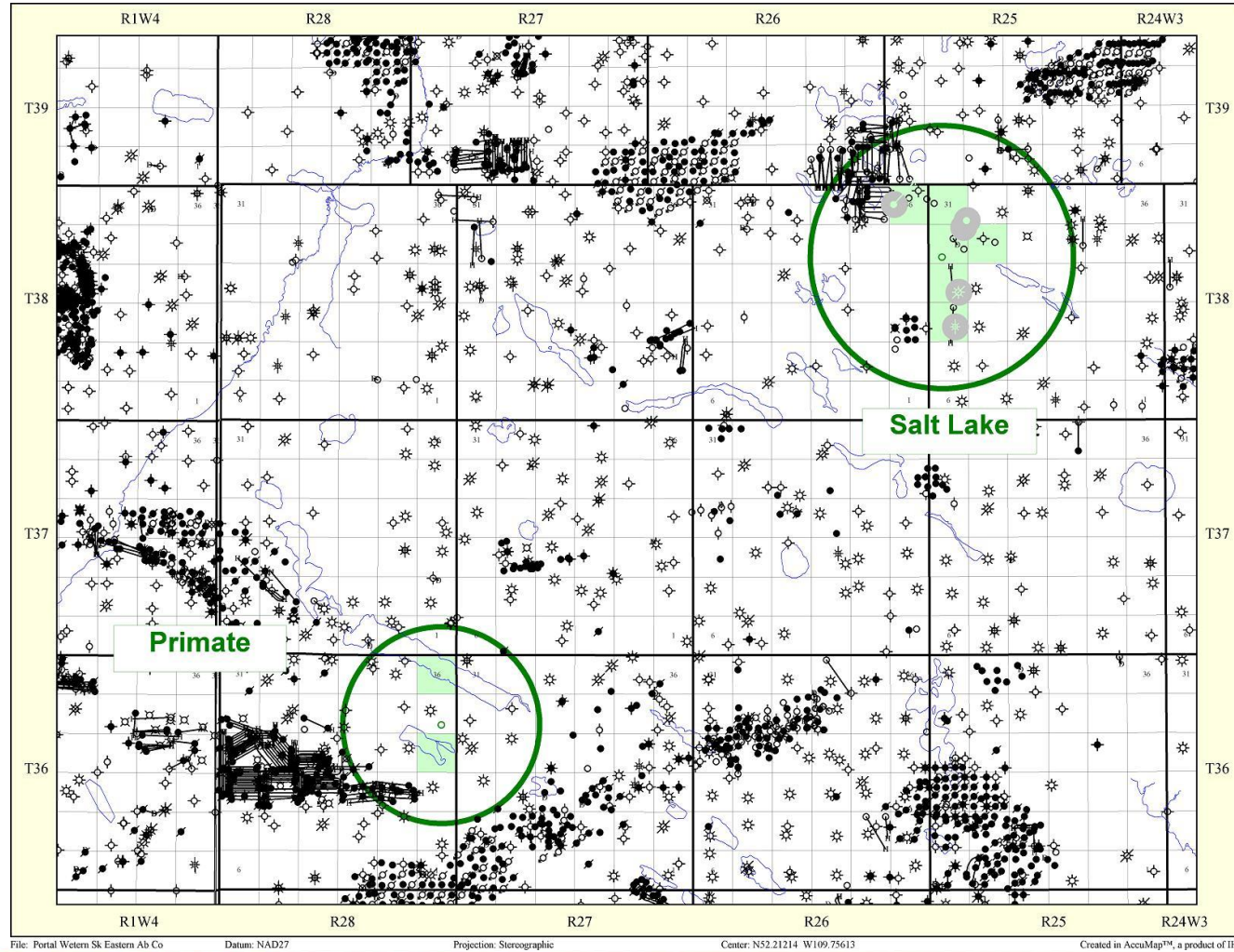
\* Based on Internal Estimates  
Source: *Macquarie Research*, April 2010

# Saskatchewan Plays Provost

Development of the Provost lands will focus on the medium/light oil in the Sparky Sands.



# Saskatchewan Plays



File: Portal Western Sk Eastern Ab Co Datum: NAD27 Projection: Stereographic Center: N52.21214 W109.75613 Created in AccuMap™, a product of IHS

# Birdbear Formation: Opportunity

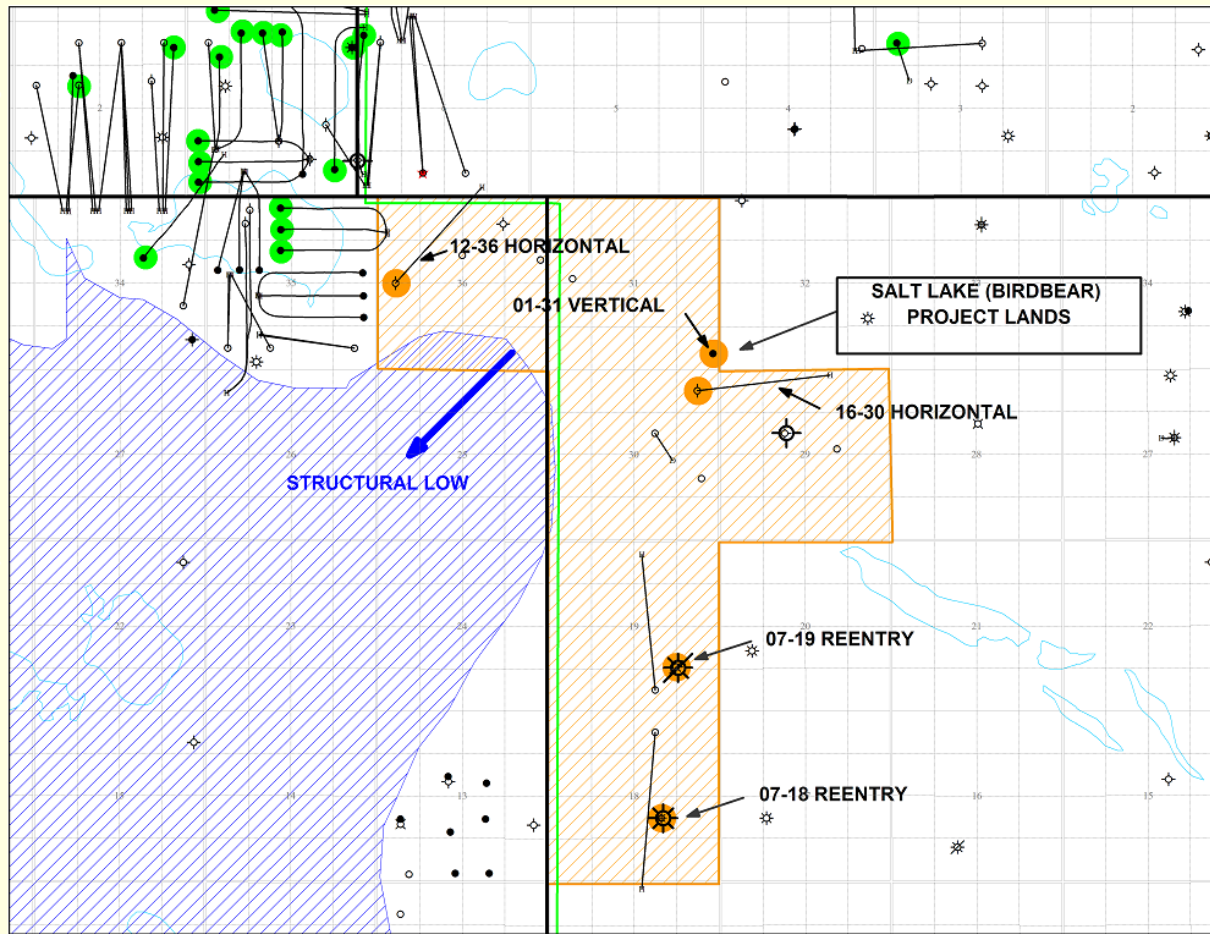
- Development potential directly offsetting production on adjacent lands.
- Several major producers developing with six to 10 horizontal wells per section.
- Initial production rates of 100+ boe/day.
- Low finding and development costs of approx. \$10/bbl.
- Approximately 40 locations are licensed in the area for 2011.



# Salt Lake Project – Birdbear Formation

- Portal has earned a 25% working interest in a development stage oil and gas play in west-central Saskatchewan with a private, Canadian oil and natural gas producer.
- The project consists of six sections (3,840 acres) of Crown land.
- Drilling operations (horizontal) will target the Birdbear formation
  - At a depth of 800 metres
  - With a horizontal leg of 300-900 metres
- Completion operations:
  - Acid wash and squeeze using coil tubing
  - No costly fracing
- Potential for additional horizontal drilling locations
- Horizontal wells qualify for Saskatchewan's drilling incentive program
  - A maximum 2.5% government mineral tax on the first 100,000 bbls

# Salt Lake Project: Plan Map



# Salt Lake: Reservoir & Operating Data

<b>Reservoir Characteristics</b>	
Depth	800 metres
Average Net Pay	4 – 7 metres
Porosity	10 to 15 %
Permeability	>1 Darcy
SW (Water Saturation)	20 %
Average API	13°
Original Oil In Place	7 to 9 MMstb *
Recovery Factor	10 to 20 % *
<b>Production Operations</b>	
Initial Production Rate	100 to 150 boe/day/horizontal *
Est. Recovery per Well	125,000 Mstb *
Reserve Life Index (RLI)	3.4**
Operating Expenses – Fixed	6500 \$/well/month *
Operating Expenses – Variable	4 \$/bbl *

\* Portal internal estimates

\*\* Estimated economic life of 10 plus years

# Salt Lake: Operating Highlights @ Portal's 25%

Well Costs (Cdn \$000)	Horizontal 100%	Horizontal 25%	Vertical 100%	Vertical 25%
Drill & Case (800m leg)	771	193	302	76
Complete	210	53	100	25
Equip (SWB)	175	44	100	25
<b>TOTAL</b>	<b>1,156</b>	<b>290</b>	<b>502</b>	<b>126</b>

<b>Initial Production Rate (bopd) 100%</b>	<b>100</b>	<b>150</b>
First Year (bopd) 25%	20	29
<b>First Year Net Cash Flow (\$K) 25%</b>	<b>334</b>	<b>498</b>
<b>Payout BT (years)</b>	<b>1</b>	<b>0.6</b>
NPV 10% BT (Net of Capital) 25%	667	1,155
<b>Finding &amp; Dev. (F&amp;D) Cost (\$/bbl)</b>	<b>9.25</b>	<b>7.71</b>
On Stream Cost (\$/flowing boe)	11,560	7,707
<b>Netback Analysis</b>		
Wellhead Price (\$/bbl)	\$58.54	\$58.54
Netback (\$/bbl)	\$45.73	\$46.95

# Why Portal?

- Proven management & technical team with successful track record of building resource companies
- Growing portfolio of quality oil plays with tremendous leverage
  - Production = Salt Lake (heavy oil)
  - Development = Provost (medium/light oil and natural gas)
  - Development = Primate (heavy oil and natural gas)
  - Exploration = Bigwave (light oil and natural gas)
  - Acquisitions = Targeting production
- Our goal is to build a mid-sized junior production company and we are aggressively pursuing production assets at a reasonable cost that we can grow.

# Contact Information

## Corporate Contacts

**Mr. David Hottman**  
**Chairman, President & C.E.O**

**Mr. Barry Reid**  
**Director, C.O.O.**

Phone: 403.514.8227

Fax: 403.303.4780

Portal Resources Ltd.  
Suite 2600, 144 – 4th Ave. SW  
Sun Life Tower West  
Calgary, Alberta  
Canada, T2P 3N4

TSX Venture Exchange “PDO” / Frankfurt Stock Exchange “P5H” / US SEC: Form 20-F Annual Report  
File No. 000-51352

## Investor Contacts

**Geoffrey Vanderburg**  
**Senior Vice President**  
**Bryan Mills Iradesso**

Phone: 403-503-0144 ext 203

E-mail: [portal@bmir.com](mailto:portal@bmir.com)

Website: [www.portalresources.net](http://www.portalresources.net)

Inst 110