



Energy & First Nations

Saskatchewan, Manitoba, Canada

September 2011

Forward Looking Statements



This presentation includes forward-looking statements as well as historical information. Forward-looking statements include, but are not limited to, Saturn Minerals Inc.'s continued advancement of its minerals exploration, development and production programs. When used in this presentation, the words "potential", "anticipate", "forecast", "believe", "estimate", "expect", "may", "project", "plan" and similar expressions are intended to be among the statements that identify forward-looking statements.

Saturn Minerals Inc. expressly warns readers not to rely on the information herein for investment or other related purposes. Accordingly, any use of this information is at their own risk and without the liability to Saturn Minerals Inc. The information contained herein is not, and under no circumstances is to be construed as either a public or a private offer or solicitation to purchase securities in the capital stock of Saturn Minerals Inc. The reader is referred to his/her professional investment advisor regarding investing or related decisions respecting the securities of Saturn Minerals Inc.

Overview – Coal & Oil



- Saturn Minerals is a TSX Venture listed exploration company
- Saturn has made 2 coal discoveries since 2010 in Saskatchewan & Manitoba
- The coal discoveries are associated with specific geophysical targets identified by air and ground gravity & EM surveys
- Both coal discoveries remain open for expansion, additional geophysical targets remain undrilled
- Coal discoveries are located 25 km and 1 km from rail & highway, respectively
- During coal exploration the Company encountered a 4.5 m intersection of light oil saturated dolomite limestone of Devonian age
- Saturn has acquired 1,500 sq. km of oil & gas rights to pursue light oil exploration in concert with its coal exploration

Overview – First Nations



- Saturn has signed a Letter of Intent with 4 bands of Saulteaux First Nations in eastern Saskatchewan to form an exploration partnership
- 'Inowending'
- First Nations Advantage – Inowending will exist as a vehicle for First Nations to enter into the mining & energy industry in Canada with a competent technical partner
- Saturn Advantage – Inowending will exist as a vehicle for Saturn to consult effectively for development of current projects & access to downstream projects via a first-of-a-kind First Nations owned mining & energy company

Core Management



Stan Szary, BA
President & CEO
Director

- Director since 2007, directed the Company to energy since 2009
- Became President & CEO in October 2010
- 34 years experience: venture capital finance, accounting, management
- BA, University of Saskatchewan, 1978



**Krzys Mastalerz, PhD,
P.Geo**
VP Exploration
Director

- Project geologist since 2007, became & VP Exploration in May 2011
- Responsible for both coal basin discoveries & light oil identification
- 31 years experience: specialization in coal & sedimentology
- PhD, University of Wroclaw, PL, 1990, P.Geo, BC, 2004



Marlene Lumberjack, LLB
Sask. Operations
Advisory Board

- Director of Sask. Operations, Advisory Board since February 2011
- Former CEO of Kinistin Saulteaux First Nation
- 22 years experience: Government, United Nations & Native Policy
- LLB, University of Saskatchewan, 2001



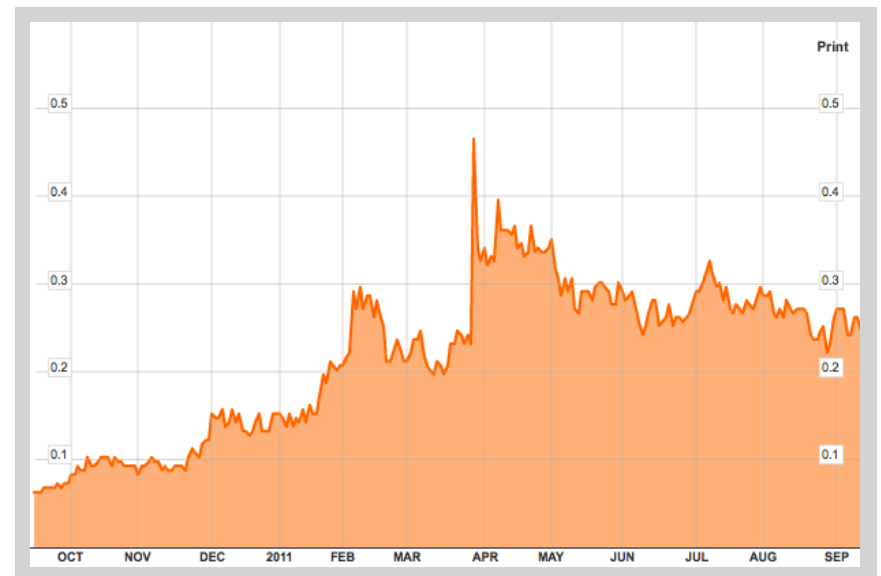
Stefan Szary, BA
Lands Manager
Director

- Lands Manager since 2007, became Director in January 2011
- Acquired over 2,500 sq. km of all coal & oil holdings since 2008
- 6 years experience: Lands, Permitting, Investor Relations
- BA, Bishop's University, 2006

Share Capital



Listings	SMI – TSX.V
1 year range	0.06 – 0.49 \$
Market cap	\$ 18 M
Shares	71 M basic 90 M fully diluted
Warrants	8 M - \$ 0.20
Options	10 M - \$ 0.17

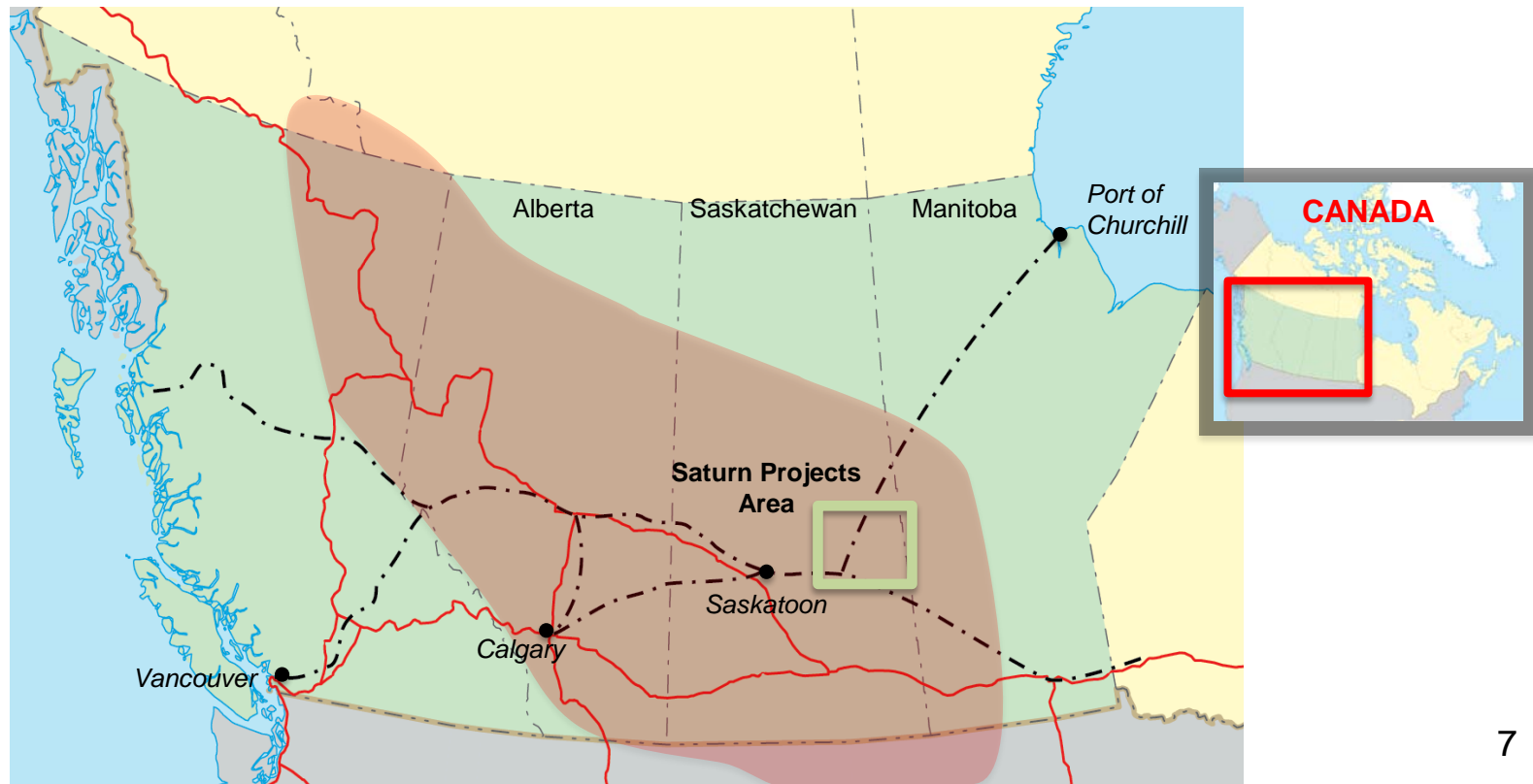


*All figures in \$ CDN unless otherwise noted, all chart data as of Sep, 15, 2011

Western Canadian Sedimentary Basin



- Saturn's projects are situated in the Western Canadian Sedimentary Basin
- The Alberta share of the basin contains 63% of Canada's known coal & oil resources
- The Saskatchewan & Manitoba share of the basin remains largely unexplored



Western Canadian Sedimentary Basin

- Saskatchewan is a natural resource storehouse



Uranium – 25% of world reserves



Diamonds – world's largest kimberlite field



Metals – gold, silver, copper, rare-earths



Oil Sands – discovered in 2005



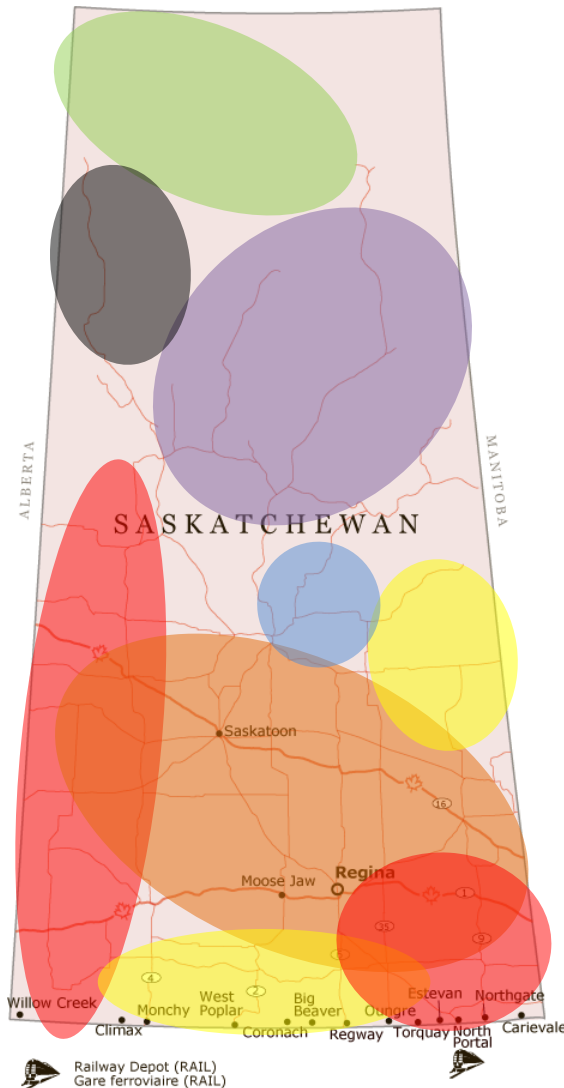
Coal – 10 million tonnes-per-year prod.



Potash – 30% of world reserves



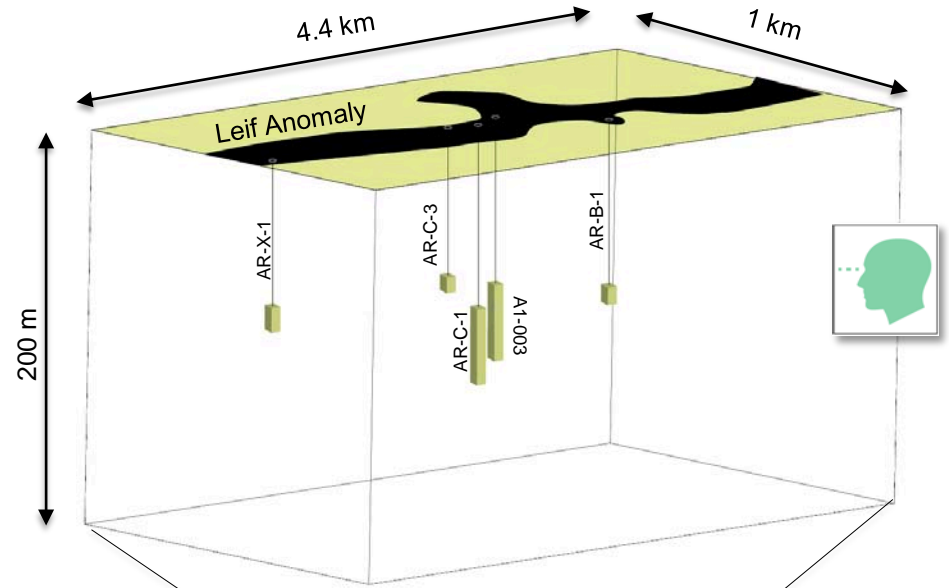
Oil & Gas – 165 million barrels-per-year prod.
245 billion cubic-feet-per-year prod.



Leif Coal Basin - Discovery

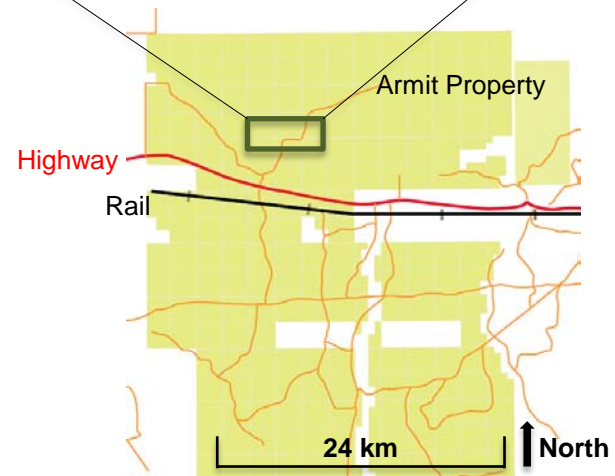


- Saturn's 1st coal discovery, early 2010
- Located in western Saskatchewan (Armit Property)
- Drill target was a discreet gravity anomaly
- 4.4 km long strike length, open
- Located within 1 km of rail & highway



LEIF COAL BASIN – Discovery Holes (as reported 10/02/10)

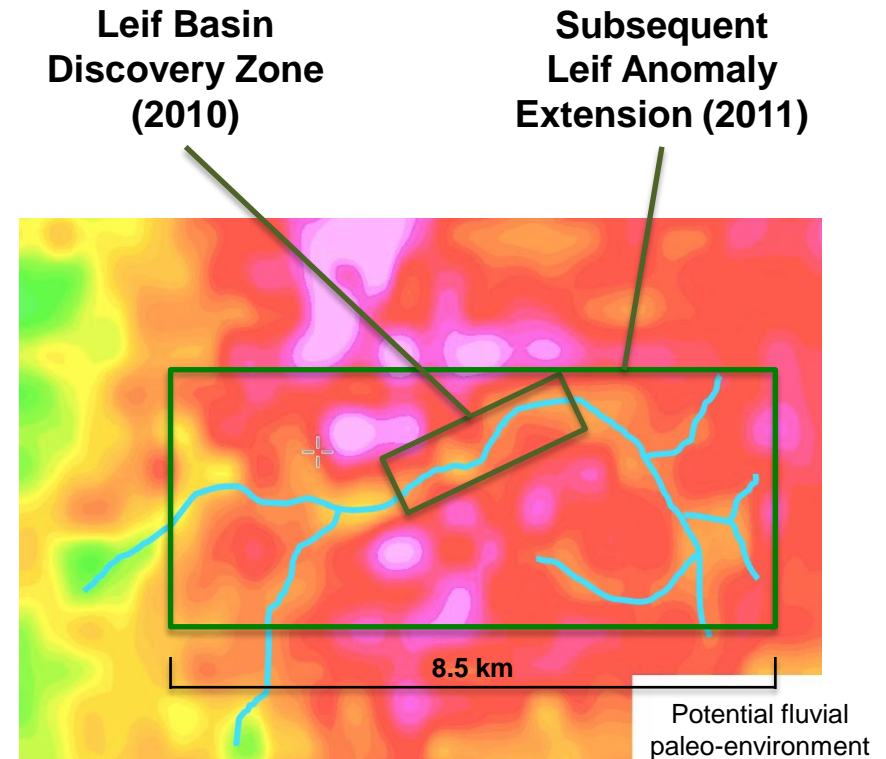
Drill Hole	Coal Width	Coal Depth	Ash % (ar)	Sulfur % (ar)	kJ/kg (ar)	kJ/kg (ad)
A1-003	9.74 m	112 m	23.3	1.9	14,777	18,132
AR-C-1	9.45 m	109 m	20.1	1.3	15,011	19,348
AR-B-1	2.29 m	111 m	52.0	3.6	6,954	8,520
AR-X-1	3.72 m	104 m	39.4	2.3	8,557	11,612
AR-C-3	2.13 m	98 m	n/a	n/a	n/a	n/a



Leif Coal Basin – Exploration 2011



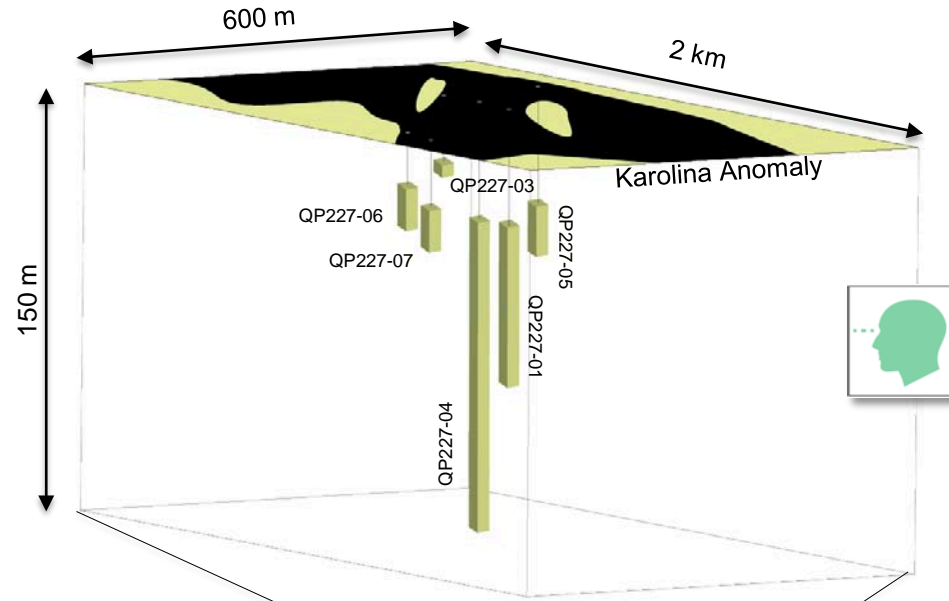
- Leif discovery drill program established coal association with the Leif anomaly
- Subsequent geophysical surveys have extended Leif anomaly to over 8.5 km
- Additional exploratory program required to test entire Leif anomaly, for extension & thickness
- Paleovalley/graben structural control exploration model
- Paleovalley/graben controlled model equates to + billion tonne coal resource target



Karolina Coal Basin - Discovery

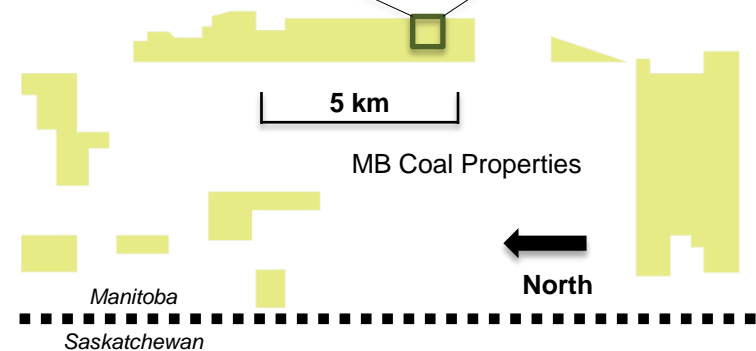


- Saturn's 2nd coal discovery, early 2011
- Located in eastern Manitoba
- Drill target was a discreet gravity anomaly
- 600 m long strike length, open
- Basin located 25 km from rail



KAROLINA COAL BASIN – Discovery Holes

Drill Hole	Coal Width	Coal Depth	Ash % (ar)	Sulfur % (ar)	kJ/kg (ar)	kJ/kg (ad)
QP227-01	39.8 m	45 m	18.4	1.6	14,443	20,016
QP227-03	3.0 m	10 m	34.3	1.5	11,397	14,538
QP227-04	88.9 m	44 m	14.9	1.6	14,390	20,343
32.01 m 'high quality' section:			8.8	-	-	24,120
QP227-05	12.3 m	21 m	20.2	1.5	14,460	19,468
QP227-06	10.3 m	14 m	19.2	1.3	15,137	19,924
QP227-07	12.3 m	13 m	22.9	1.4	14,251	19,287



Karolina Coal Basin – Exploration 2011

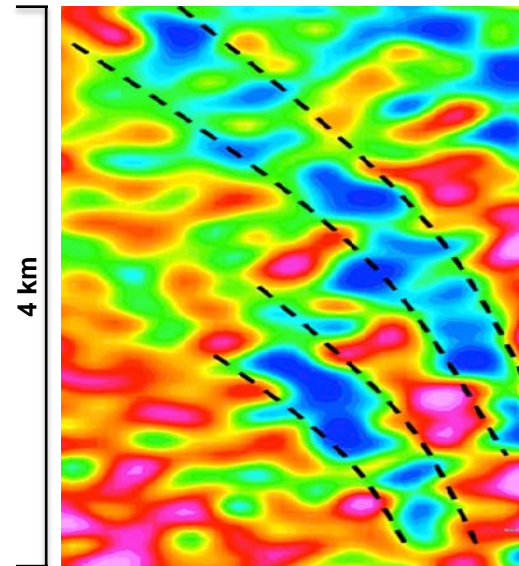


- Karolina discovery drill program established coal association with the Karolina-type anomaly (differs from Leif)
- Subsequent geophysical surveys have identified similar Karolina-type anomalies on trend for several km
- Additional exploratory program required to test entire Karolina anomaly as well as other Karolina-type anomalies
- Karstification structural control exploration model
- Karstification controlled model equates to shallow coal targets of massive thickness



Analogous Area

*Karst Lakes
Central Florida*



Gravity Data

*MB Properties
Saturn Minerals*

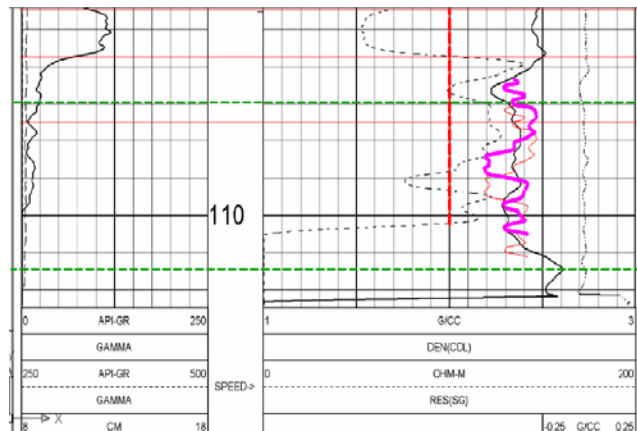
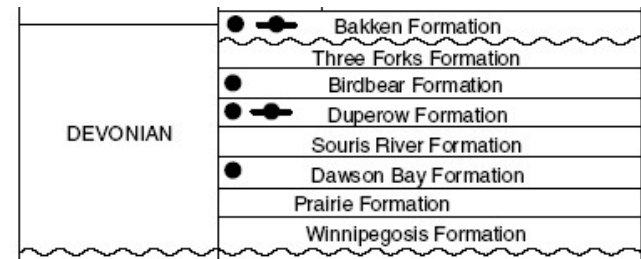
Armit Oil - Discovery



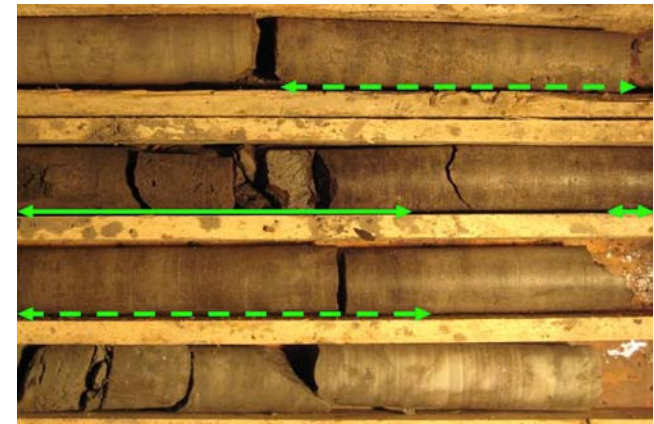
- During coal exploration in 2010 Saturn encountered a 4.5 m intersection of light oil saturated dolomite limestone of Devonian age at 120 m depth
- Rock porosity: 28%
Rock permeability: 1400 md (horizontal)
800 md (vertical)
- Subsequent evaluation has determined the potential for a previously unknown Petroleum System in eastern Sask.

Known Devonian Oil Formations in Project Area

- Source Rock
- Reservoir Rock



Down hole electrical logs
Correspond with light oil encounter

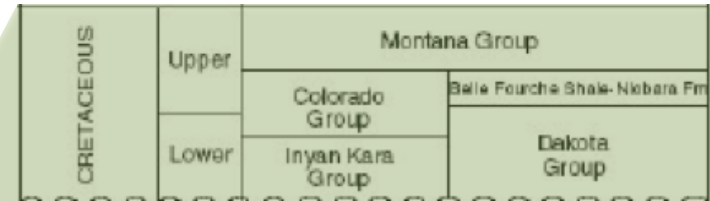


Armit Oil - Exploration

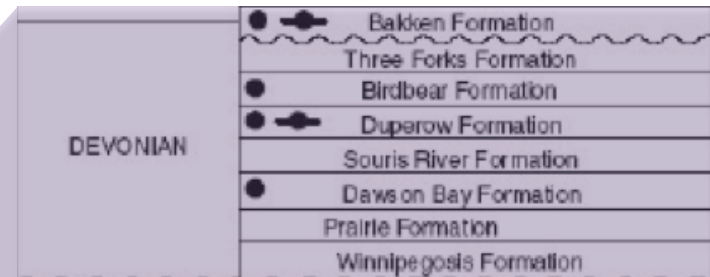


- The Devonian light oil encountered is located in the eastern margins of the Williston Sedimentary Basin
- Likely source is palaeozoic source rock from the central part of the basin
- Exploration targets are structural & stratigraphic palaeozoic reservoirs

Potential seal rocks as encountered

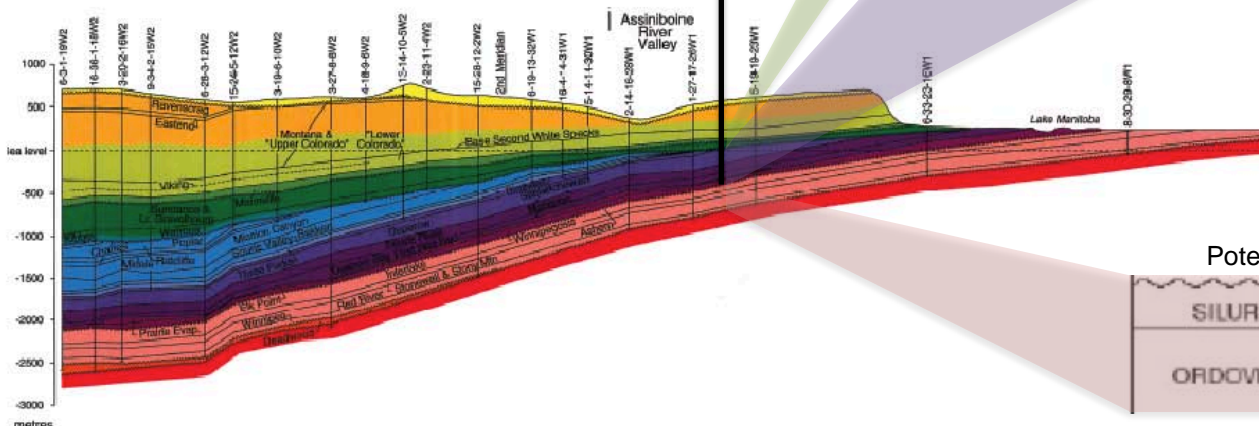


Potential source & reservoir rocks as encountered

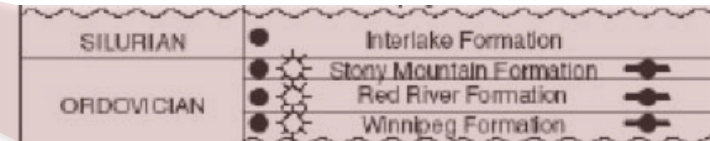


Discovery Hole Stratigraphy

Williston Basin Cross-Section

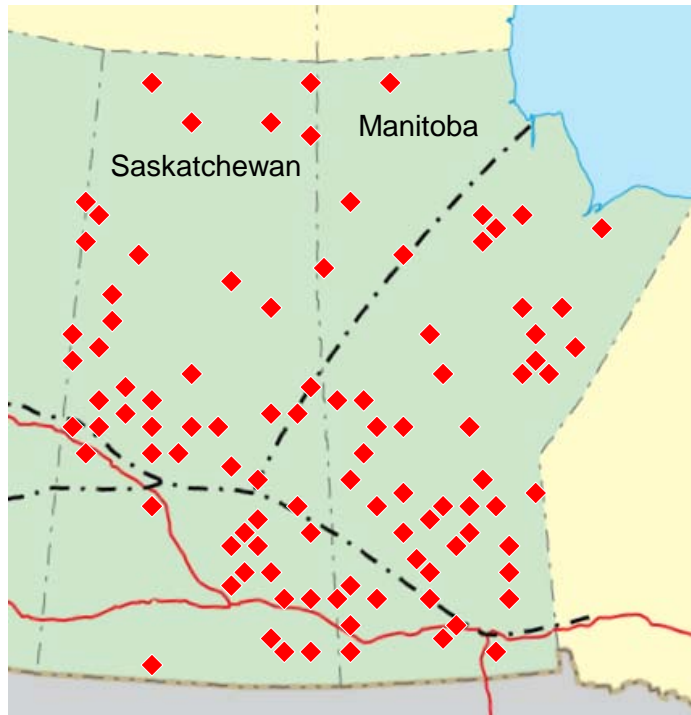


Potential source & reservoir rocks as modeled



Inowending – Indigenous Presence

- Inowending's strategy is to identify, acquire and develop natural resource projects
- As a First Nations entity, Inowending will have several competitive advantages in Canada:



◆ First Nation Community & Reserve

- 1) Access to new projects otherwise unavailable to traditional exploration companies
- 2) Favorable political support
- 3) Positive cultural implications for the broader industry in Canada
- 4) Ability to circumvent potential obstacles to development (Taseko, Noront)
- 5) Tax-free income from any producing assets as per Canadian First Nations investment law

Coal Explorers/Producers

Coal-Per-Share a Key Driver of Value



Company	Symbol	Market Cap	Coal Resource	Coal Type	Shares Outstanding	Coal-per-Share
*New Hope Coal Ltd.	ASX - NHC	4,300 mil	1,348 mt	Thermal	830 mil	1.6 t
*Alliance Resource Partners LP	NASDAQ - ARLP	2,617 mil	673 mt	Thermal	36 mil	18.3 t
*Cloud Peak Energy Inc.	NYSE – CLD	1,018 mil	1,004 mt	Thermal	60 mil	16.7 t
*Optimum Coal Holdings	JSE - OPT	934 mil	918 mt	Thermal	251 mil	3.7 t
Coalspur Mines Ltd.	TSX - CPT	814 mil	958 mt	Thermal	532 mil	1.8 t
*James River Coal Co.	NASDAQ - JRCC	358 mil	271 mt	Thermal	35 mil	7.6 t
*Pacific Coal Resources Ltd.	TSX.V - PAK	193 mil	87 mt	Thermal	333 mil	0.3 t
*Forbes & Manhattan Coal Corp.	TSX - FMC	85 mil	54 mt	Thermal	35 mil	1.6 t
Erden Resource Development Corp.	TSX - ERD	56 mil	227 mt	Thermal	90 mil	0.2 t

*Producing Company

All data taken from respective Company's public filings, all market value data as of Sept. 13, 2011

Summary



- Saturn is an exploration company
- Saturn has 2 coal discoveries
- Established & growing value:
Proving & building coal-per-share
- Blue sky potential:
potential high porosity/light oil system
- Strong management:
clear and simple objectives
- Unique advantage:
tangible partnership with First Nations
Intangible relationship with First Nations

Potential Coal Resource	Saturn Shares Outstanding	Coal-per-Share
100 mt	71 mil	1.4 t
150 mt	"	2.1 t
200 mt	"	2.8 t
250 mt	"	3.5 t
300 mt	"	4.2 t
400 mt	"	5.6 t
500 mt	"	7.0 t
700 mt	"	9.6 t
900 mt	"	12.6 t
1,200 mt	"	16.9 t

Saturn – Unique Discoveries



Karolina Coal Basin – Discovery Hole
88.98 meters of coal

for illustrative purposes only



Saturn – Special Relationships



Onion Lake Cree Nation 2011 Pow Wow

